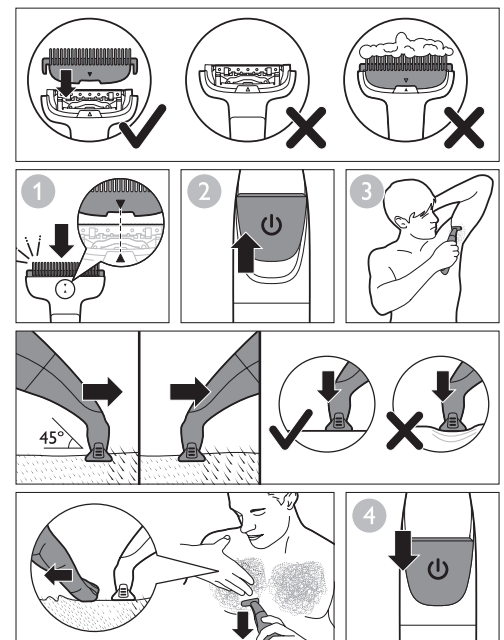
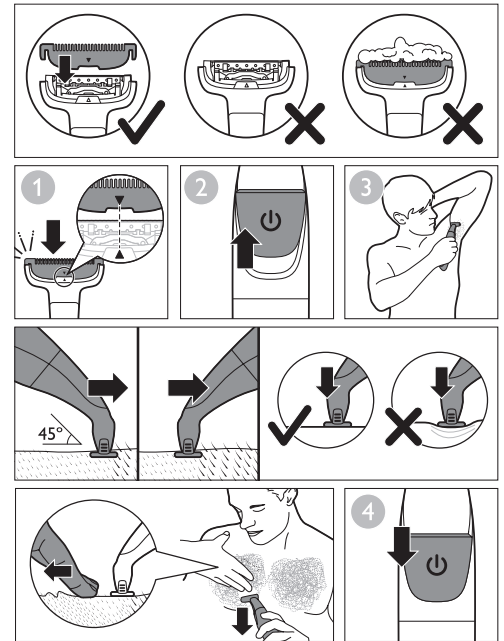
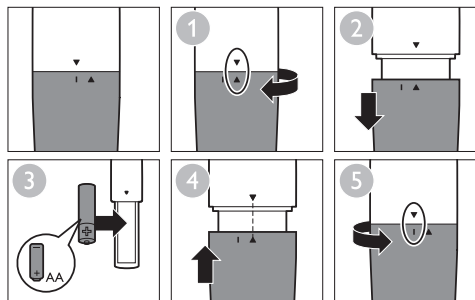
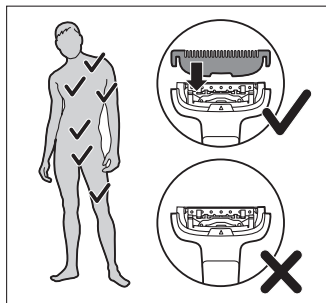
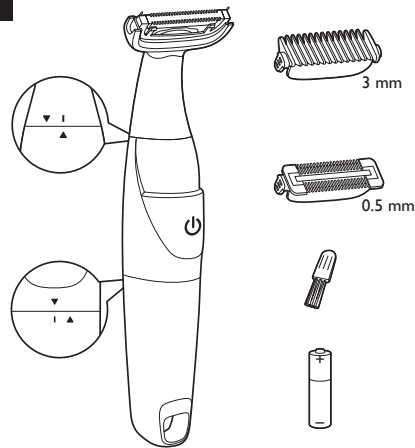


PHILIPS

BG105



>75% recycled paper

© 2018 Koninklijke Philips Electronics N.V.
All rights reserved.
4222.002.8546.2 (01/02/2018)

ENGLISH

Important safety information

Read this important information carefully before you use the appliance and its accessories and save it for future reference. The accessories supplied may vary for different products.

Warning

- This appliance can be used by children aged from 8 years and above and persons with reduced physical, sensory or mental capabilities or lack of experience and knowledge if they have been given supervision or instruction concerning use of the appliance in a safe way and understand the hazards involved. Children shall not play with the appliance. Cleaning and user maintenance shall not be made by children without supervision.
- Always check the appliance before you use it. Do not use the appliance if it is damaged, as this may cause injury. Always replace a damaged part with one of the original type.

Caution

- Never use water hotter than 60°C to rinse the appliance.
- Only use this appliance for its intended purpose as shown in the user manual.
- Use and store the appliance at a temperature between 0°C and 50°C.

- For hygienic reasons, the appliance should only be used by one person.
- Only use this appliance on body areas below the neckline. Do not use the appliance on the head and face.
- Do not use the appliance without the 0.5mm skin protector or the 3mm trimming comb.
- We strongly advise you to trim longer hairs with the 3mm trimming comb first before you use the 0.5mm skin protector, which is specially intended for trimming shorter hairs.
- The appliance works best under dry conditions. Dry your skin with e.g. a towel when you use it on moist areas, such as the underarms.
- Do not expose the appliance to direct sunlight.
- Only operate the appliance on 1.5V AA alkaline batteries.
- Do not mix different types of batteries or new and used batteries.
- Do not recharge non-rechargeable batteries.
- Insert batteries with the + and - poles pointing in the right direction.
- Do not short-circuit the supply terminals of batteries.

- Remove batteries from the appliance if you are not going to use it for some time.
- Never use compressed air, scouring pads, abrasive cleaning agents or aggressive liquids such as petrol or acetone to clean the appliance.

Electromagnetic fields (EMF)

This Philips appliance complies with all applicable standards and regulations regarding exposure to electromagnetic fields.

General

- This appliance is waterproof. It is suitable for use in the bath or shower and for cleaning under the tap (Fig. 1).

Recycling

- This symbol means that this product shall not be disposed of with normal household waste (2012/19/EU) (Fig. 2).
- This symbol means that this product contains disposable batteries which shall not be disposed of with normal household waste (2006/66/EC) (Fig. 3).
- Follow your country's rules for the separate collection of electrical and electronic products and batteries. Correct disposal helps prevent negative consequences for the environment and human health.

To remove disposable batteries, see the instructions for placing and/or removing batteries in the user manual.

Always remove empty disposable batteries from the product. Take any necessary safety precautions when you dispose of batteries.

Warranty and support

If you need information or support, please visit www.philips.com/support or read the international warranty leaflet.

Warranty restrictions

Cutting units are not covered by the terms of the international warranty because they are subject to wear.

