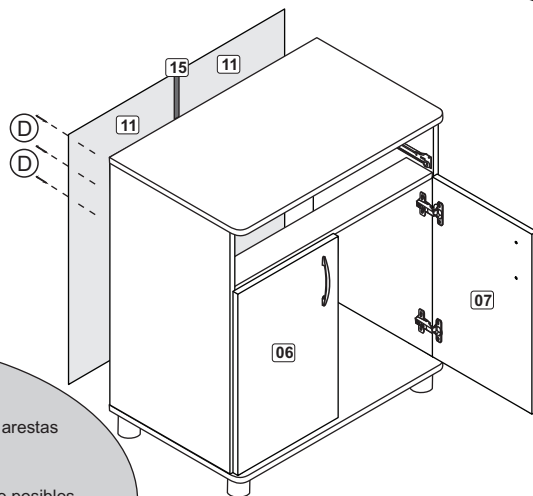


06



ATENÇÃO!!!

Utilize o giz de cera para dar acabamento nas arestas e correções de possíveis riscos nas peças.

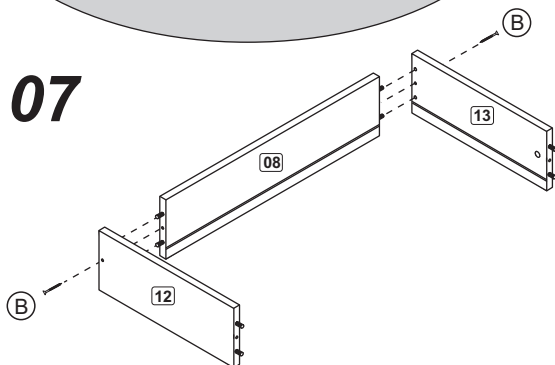
ATENCIÓN!!!

Utilice el tiza para los bordes y correcciones de posibles errores o riesgos en piezas.

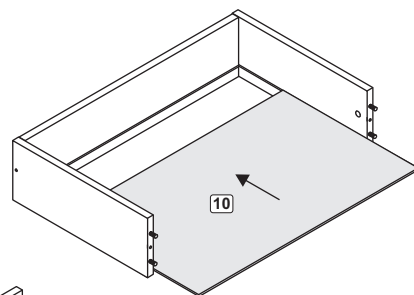
ATTENTION!!!

Use the crayons to finish edges and to fix possible damaged pieces.

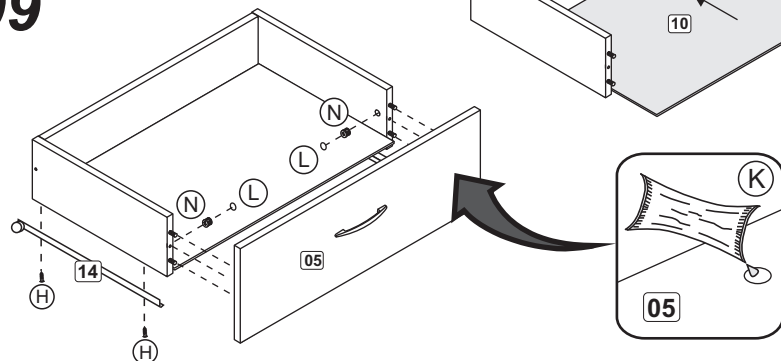
07



08



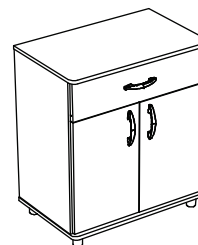
09



Politorno
Móveis

RST 470 - Km 203,3 BENTO GONÇALVES - RS - BRASIL
FONE: 54-3458.1300 - FAX: 54-3458.1304

www.politorno.com.br



INSTRUÇÕES DE MONTAGEM

INSTRUCTIVO DE ARMADO
ASSEMBLY INSTRUCTIONS

Itaim 2 Portas e 1 Gaveta
Itaim 2 Puertas e 1 Cajón
Itaim with 2 Doors and 1 drawer

Modelo
Modelo
Modelo

3295

Caso você precise de um montador consulte o site www.politorno.com.br
Temos profissionais capacitados nas principais capitais do Brasil.

DÚVIDAS? ENVIE UM EMAIL PARA: sac@politorno.com.br
DUDAS? ENVIE UN CORREO A: sac@politorno.com.br
QUESTIONS? SEND AN EMAIL TO: sac@politorno.com.br

KIT FERRAGEM
KIT HERRAJE
HARDWARE KIT

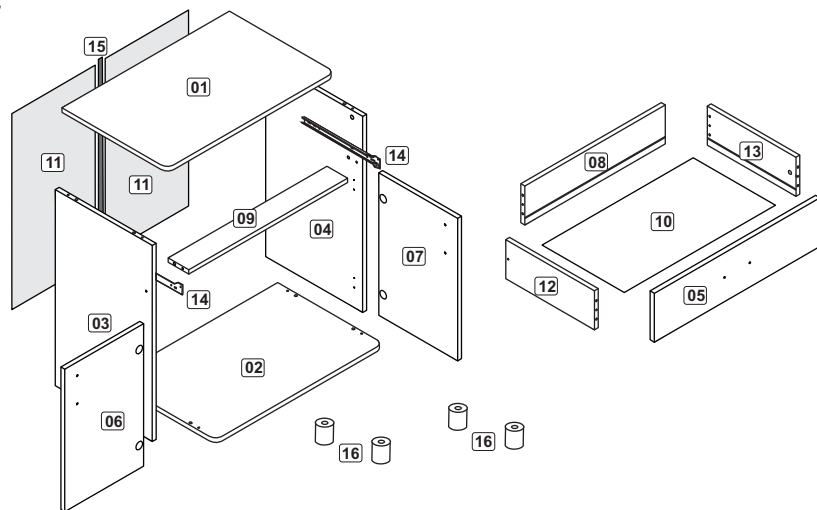
A		6,0 x 30	08
B		4,5 x 45	06
C		3,5 x 14	16
D		10 x 10	25
E		8,0 x 30	10
F			03
G		5,0 x 40	04
H		3,0 x 14	08
I		3,5 x 25	06
J			04
K		Cola/Glue	01
L			02
M			08
N			08
O		Giz / Tiza / Crayons	03



Rev 03

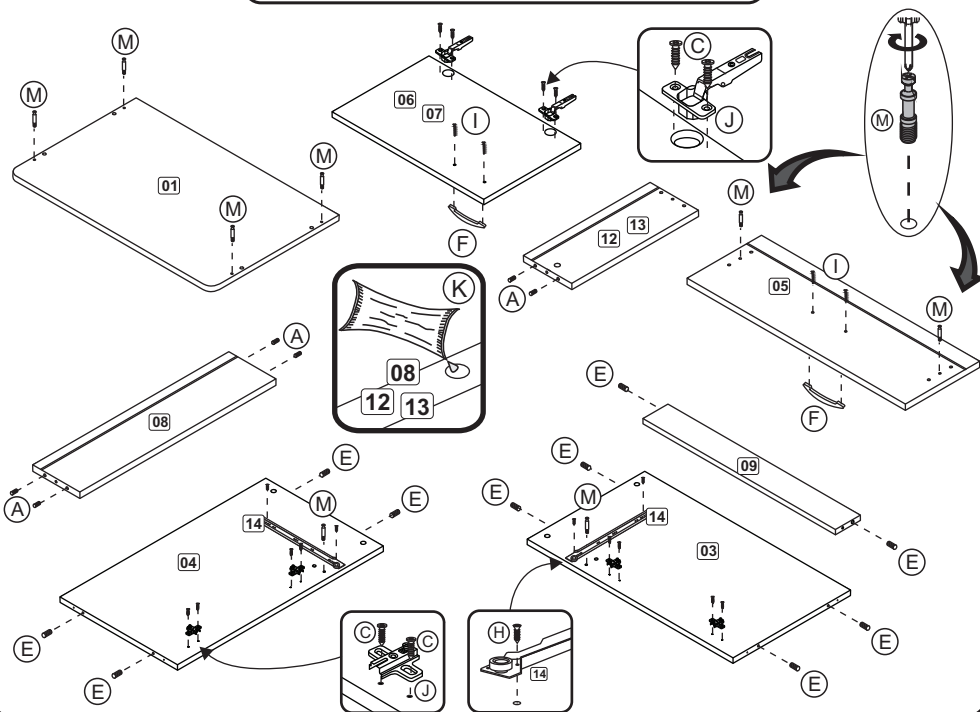
ANTES DE INICIAR A MONTAGEM, IDENTIFIQUE TODAS AS PEÇAS E ACESSÓRIOS.
ANTES DE EMPEZAR LA ASAMBLEA, IDENTIFIQUE TODAS LAS PIEZAS Y ACCESORIOS.
BEFORE STARTING THE ASSEMBLY, IDENTIFY ALL PARTS AND ACCESSORIES.

01

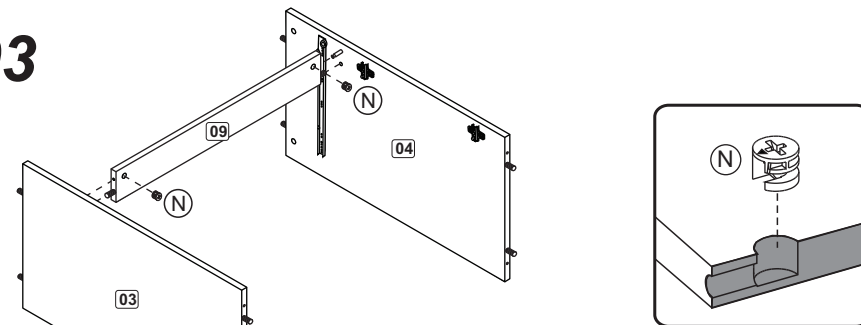


02

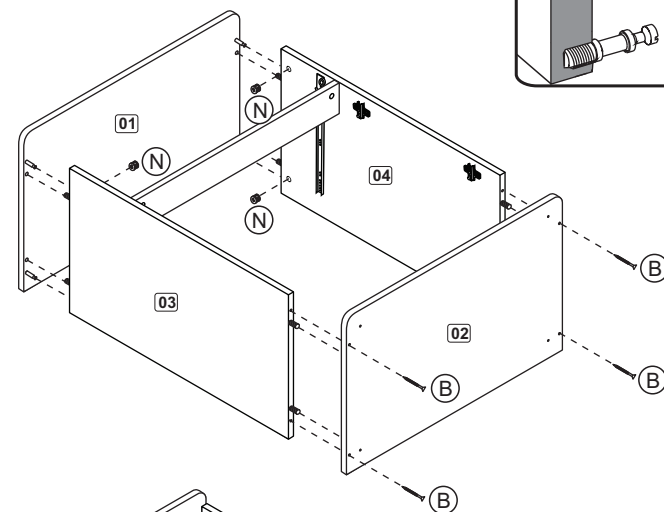
ETAPA DE PREPARAÇÃO DAS PEÇAS.
FASE DE PREPARACIÓN DE LAS PIEZAS.
STAGE OF PREPARATION OF THE PIECES.



03



04



05

